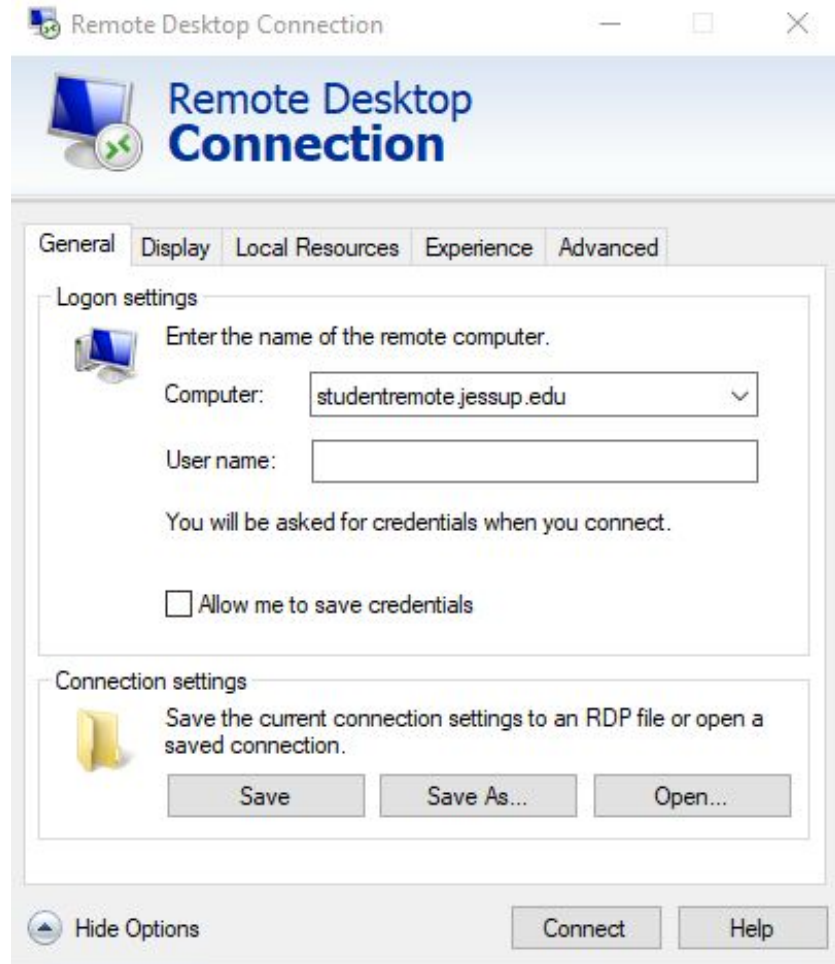


Student Remote Desktop Instructions

Windows Instructions

1. Click **Start**, and type or search for **Remote Desktop Connection**
2. Open **Remote Desktop Connection**
3. Click on **Show Options**
4. In the Computer field, type **studentremote.jessup.edu**

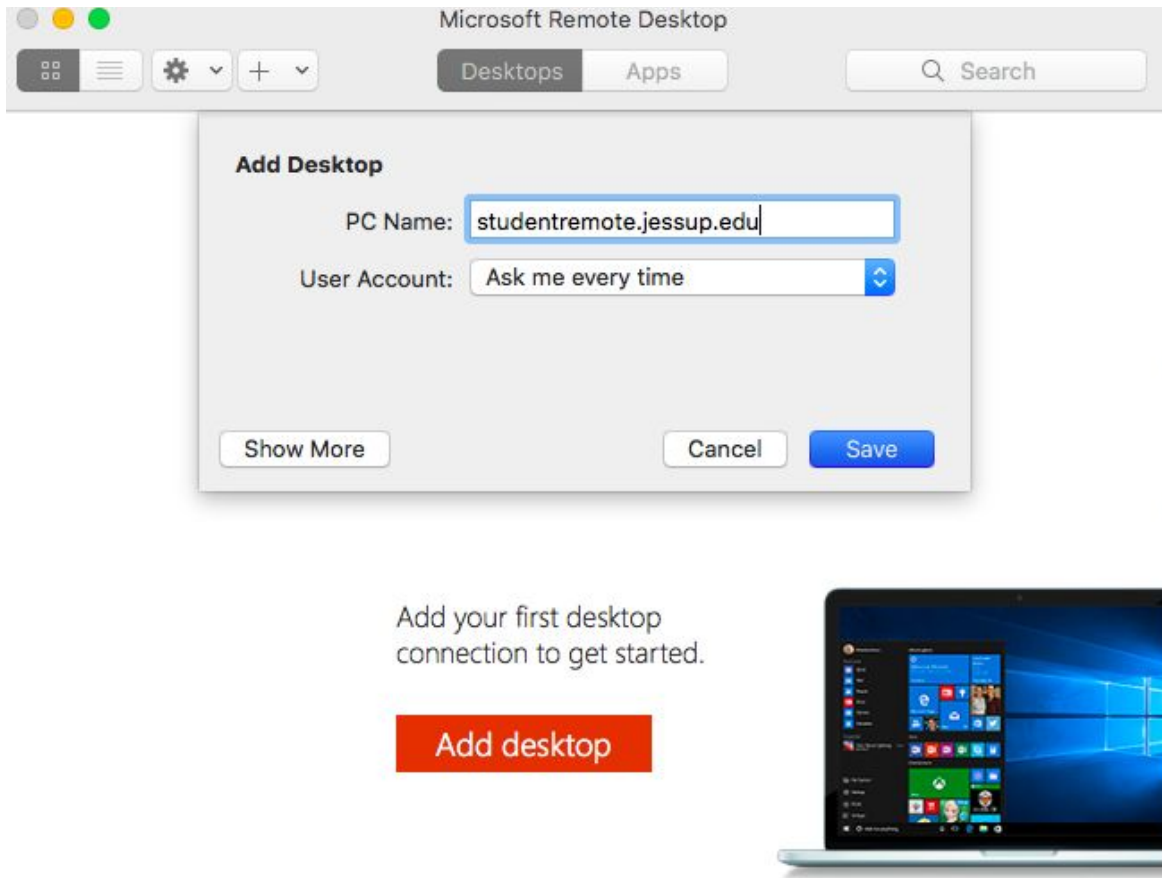


5. Click **Save As**, and save the shortcut to your Desktop
6. For the file name, type something easy to remember such as **Student Remote**
7. Close the window and return to your Desktop
8. Double Click on the **Student Remote** shortcut
9. Check the box for “Don’t ask me again for connections to this computer”
10. Click **Connect**
11. Login with your Student credentials. **Example:**
 - a. firstname.lastname
 - b. yourpassword
12. Enjoy! Remember to click the **Log Off** icon when done

Student Remote Desktop Instructions

Mac Instructions

1. In the App Store, search for and install **Microsoft Remote Desktop 10**
2. Open **Microsoft Remote Desktop 10**
3. In the PC Name field, type **studentremote.jessup.edu**



4. Click **Save**
5. Double Click on the **studentremote.jessup.edu** icon
6. Check the box for "Don't ask me for connections to this computer"
7. Click **Continue**
8. Login with your Student credentials. **Example:**
 - a. WJU\firstname.lastname
 - i. Note: **WJU\ is required**
 - b. Yourpassword
9. Enjoy! Remember to click the **Log Off** icon when done